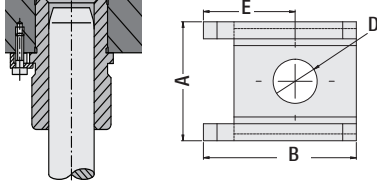
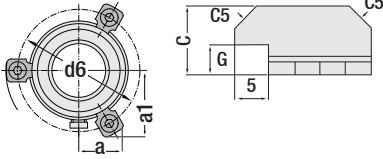


Montaj Örneği



Kalıp Plaka Konum



Burç Tutucu

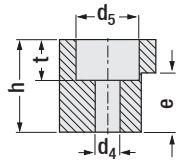
Kod: G 101

Ø d Burç	A mm	B mm	C mm	D mm	E mm	G mm	Form
32 / 40 50 / 63 63 / 80 100 115	17.5	22.5	12	6.5	13.5	6	A (M6 x 20)
32 / 40 50 / 63 63 / 80 100 115 125	21	25.5	13.5	8.5	15	5.5	B (M8 x 20)

Grafitli ve diğer burçlar ile kullanılır.
Ø ≤ 63 - 2 adet ve Ø ≥ 80 - 3 adet tutucu
kullanılır. Montaj civataları ayrıca sipariş edilmelidir.



Sipariş: G101. Form

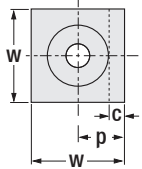


Burç Tutucu

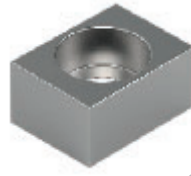
Kod: G 102E

Ref: CNOMO

Sipariş Örneği:
G102E.40



Burç	w	p	h	e	c	t	d ₄	d ₅
40	18	9.5	12	8	3	7	6.6	11
50	22	12	16	10	4	9	9	15
63			20	12				
80	26	15	25	16	5	11	11	18
100			32	20				



Tutucu Kama Blok

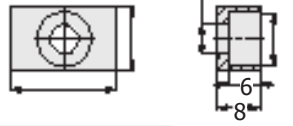
Malzeme: CK45

Kod: G 171

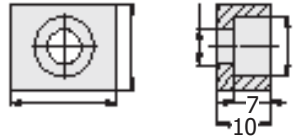
Sipariş Kodu: G 171A



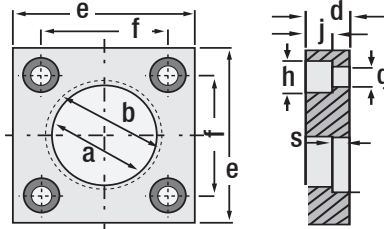
Sipariş Kodu: G 171B



Sipariş Kodu: G 171C



Uyumlu
Kolonlar:
G03
G04
G05



Kolon Tutucu Flaş

Kod: G 119

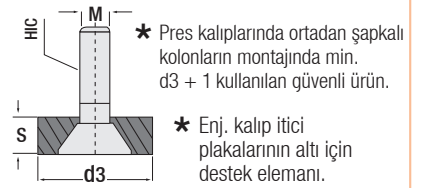
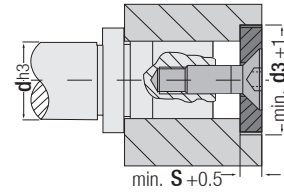
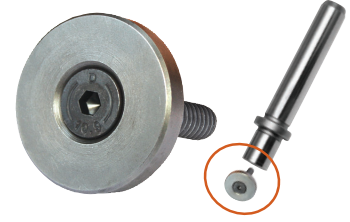
Referans: CNOMO

Referans: PSA

a Kolon	b	d	e	f	g	h	j	s
25	28	10	45	31				2.7
32	37		56	36	6.6	11	7	
40	45	12	70	50				4.2
50	55	14	80	55	9	16	9	
63	70	18	100	70	11	18	11	
80	87	20	110	80				6.2
100	107	20	140	100	13	22	14	



Sipariş: G119. a (kolon)



* Pres kalıplarında ortadan şapkalı kolonların montajında min. d3 + 1 kullanılan güvenli ürün.

* Enj. kalıp itici plakalarının altı için destek elemanı.

Kolon Montaj Flaş

Kod: G 110

Kolon Bağlama / Kalıp İçi Destek Elemanı

Ø d3	Kolon Çapı d	Flaş S	Cıvata M
22	15 / 16	5.5 mm	M8 x 20
25	19 / 20		
32	24 / 25	7.5	
40	32 / 30	9.5 mm	
50	38 / 40		
60	48 / 50		
73	60 / 63		
93	80	12	M12 x 20



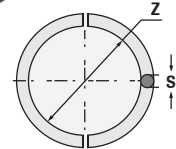
Sipariş:
G110. d3

Sipariş Örneği:

G110.50



Uyumlu Kolonlar:
G02 - G03 - G04
G05 - G06 - G07
G09 - G20



Kolon Segmanı

Kod: G 112

Sipariş Kodu	Kolon	z	s
G11225	Ø 25	22.5	2.5
G11232	Ø 32	28	
G11240	Ø 40	36	4
G11250	Ø 50	46	
G11263	Ø 63	57	
G11280	Ø 80	74	6
G112100	Ø 100	94	